

საქართველოს სსრ კულტურის სამინისტრო
ხალხური შემოქმედების რესპუბლიკური სახლი

მ. გორდელი

სიმღერა საქართველოზე

სოლისტიზა და გუნდისათვის

ფ. ა. თანხლებით

თბილისი

1969

784. 3 (479. 22) + 784. 0842 685 (4 5. 22)

ჩვენს სამოცხეში

სიმღერა საქართველოზე

ტაქ. პ. გრუზინსკისა

მუს. ო. გორდელისა

მუხარებლის

Handwritten musical notation for the first system. It consists of two staves. The upper staff is in treble clef with a key signature of two flats (B-flat and E-flat) and a common time signature. It features a melodic line with a fermata over a chord. The lower staff is in bass clef and contains a bass line with a triplet of eighth notes. A dynamic marking 'f' is present in the lower staff.

Handwritten musical notation for the second system. It consists of two staves. The upper staff continues the melodic line with a fermata. The lower staff continues the bass line with triplets. The key signature remains two flats.

Handwritten musical notation for the first system on the second page. It consists of two staves. The upper staff has a melodic line with a fermata. The lower staff has a bass line with triplets. The key signature is two flats.

Handwritten musical notation for the second system on the second page. It consists of two staves. The upper staff has a melodic line with a fermata. The lower staff has a bass line with chords. The key signature is two flats.

Handwritten musical notation for the third system on the second page. It consists of two staves. The upper staff has a melodic line with a fermata. The lower staff has a bass line with triplets. The key signature is two flats.

M 10857 M 13628

FM 185

mf სოლო ხავთე-ბერ-

სა-ღა-ნა- ვლის თვეს

ა- სე ში- ანს,

თებერ-ვალ- ში

ჩვენს მხარე- ში

Detailed description: This page contains a musical score for a vocal piece. It consists of four systems. Each system has a vocal line on a single staff and a piano accompaniment on two staves. The lyrics are in Georgian. The first system starts with a mezzo-forte (*mf*) dynamic. The piano accompaniment includes a piano (*p*) dynamic marking. The score is written in a key signature of two flats and a 4/4 time signature.

შევა- ვის ი- ა

Detailed description: This page continues the musical score from page 4. It features a vocal line and piano accompaniment. The lyrics are in Georgian. The piano accompaniment has a piano (*p*) dynamic marking. The score is written in the same key signature and time signature as the previous page.

f სი-წმა- რი- ა- ან წდა- ქა- რი

გუნდი

P

P

ახ- დე- ნი- ლა ნამ- დვი- ლად:

Handwritten musical score for page 8. The top staff is a vocal line in G major (one sharp) and 4/4 time, with lyrics in Georgian: "ჩვენი მიწა-ზე ყველა-ღმრთეობა დას სება-ყო". The piano accompaniment consists of three staves: a grand staff (treble and bass clefs) and a separate treble clef staff. The piano part includes a melodic line in the bass clef and chordal accompaniment in the treble clef. A triplet of eighth notes is marked in the bass clef of the grand staff.

Handwritten musical score for page 9. The top staff is a vocal line in G major (one sharp) and 4/4 time, with lyrics in Georgian: "ჩა- მღვარ- ღნი- ლა;". The piano accompaniment consists of three staves: a grand staff (treble and bass clefs) and a separate treble clef staff. The piano part includes a melodic line in the bass clef and chordal accompaniment in the treble clef. A triplet of eighth notes is marked in the vocal line.

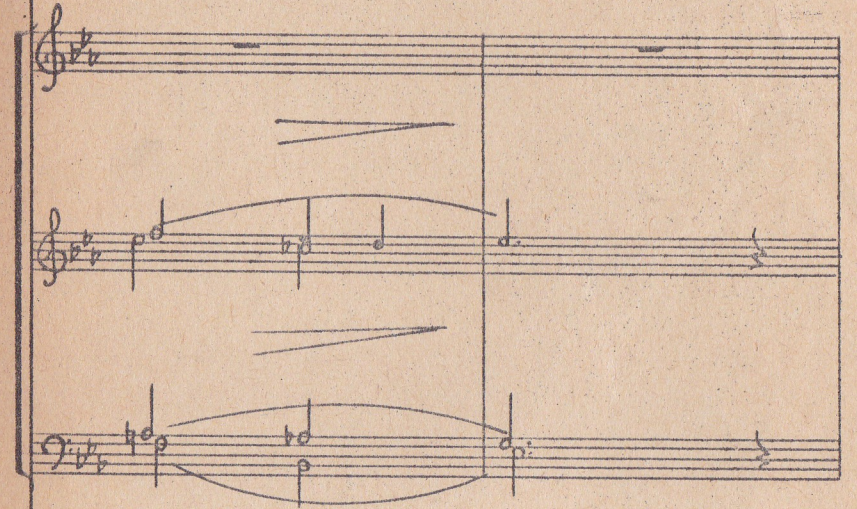
ცი-დან



თით- ქობ თოვ-ლის ნაც- ვლად ზამ- ბა-



ხე- ბი ბარ- დნი- და.



Musical score for page 12, featuring vocal lines and piano accompaniment. The score is in G major (one flat) and 4/4 time. It consists of three systems. The first system includes a vocal line with lyrics "ფა-ზა-ფხულ- და-ვეღვან მზე-" and a piano accompaniment. The second system continues the vocal line and piano accompaniment. The third system shows the piano accompaniment with chords and arpeggios. Dynamics include *ff* and *f*.

Musical score for page 13, continuing the vocal lines and piano accompaniment from page 12. The score is in G major (one flat) and 4/4 time. It consists of two systems. The first system includes a vocal line with lyrics "და გულ- ში- აც მზე ა- რი," and a piano accompaniment. The second system continues the vocal line and piano accompaniment. Dynamics include *ff* and *f*.

Handwritten musical score for page 14. The score is written in a minor key (one flat) and 4/4 time. It consists of a vocal line and piano accompaniment. The vocal line includes the lyrics: "ღღეს ა. ხა-ლისა-ქარ- თვე-ღობს და ბა-". The piano accompaniment features a melodic line in the right hand and a bass line in the left hand. The dynamic marking *mf* is present throughout the piece.

Handwritten musical score for page 15. The score continues from page 14, maintaining the same key signature and time signature. It includes a vocal line with the lyrics: "ღე- ბის ღღე ა- რი,". The piano accompaniment continues with melodic and harmonic support. The dynamic marking *f* is used in this section.

mf

ო- მია-ტომ, რომიე-ბერ-ვლის დღეს

p

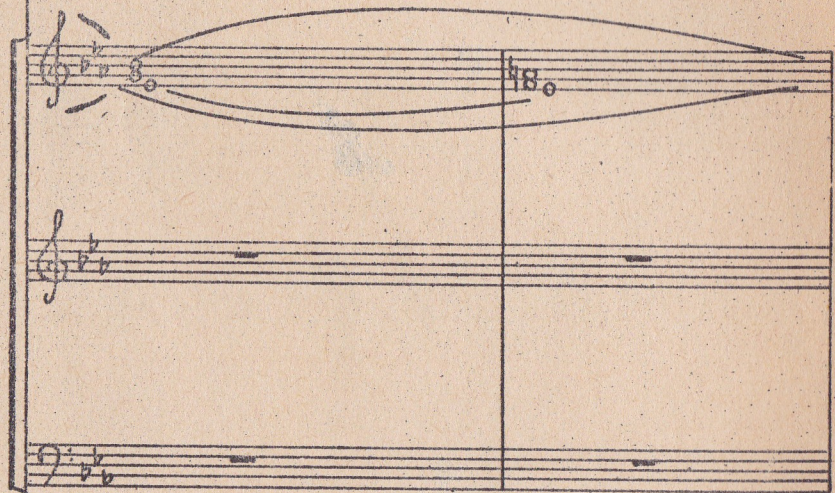
FM 185
2

ლომს და მზი- ანს

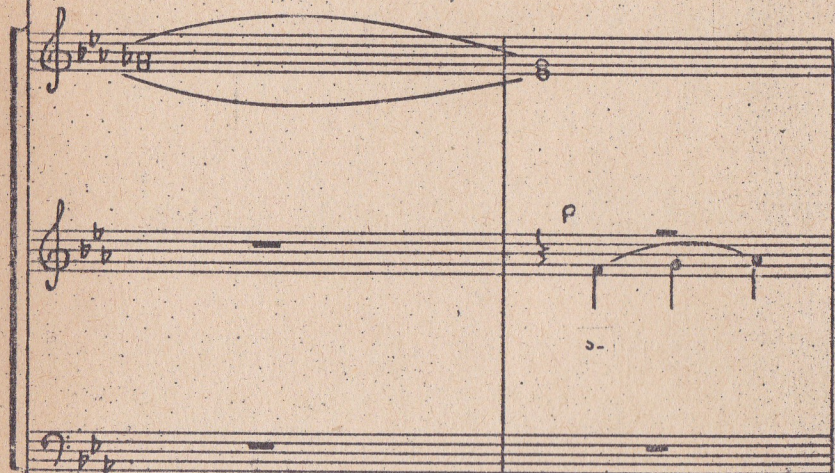
pp



სა-ქარ-თვი- ლოს და-ბა- დე- ბის

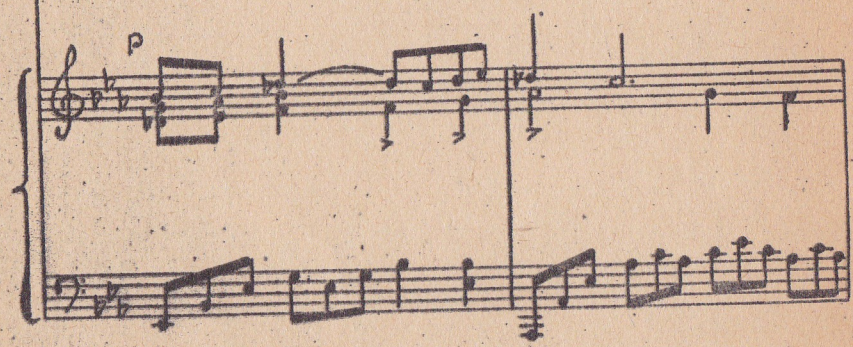
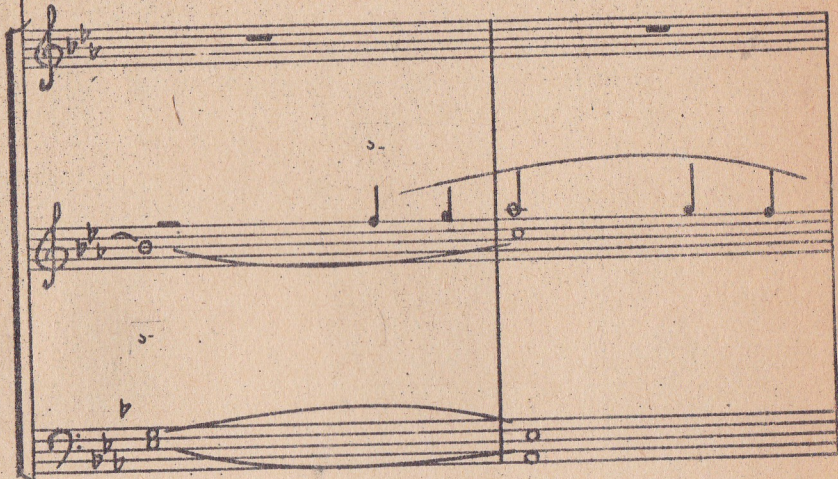


დღე- ცა ჰქვი- აქ

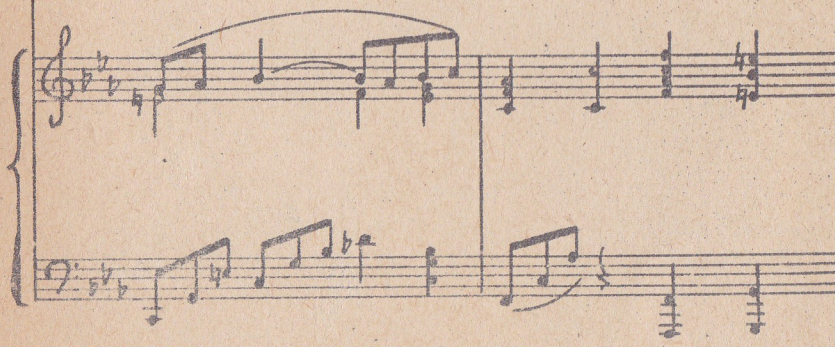
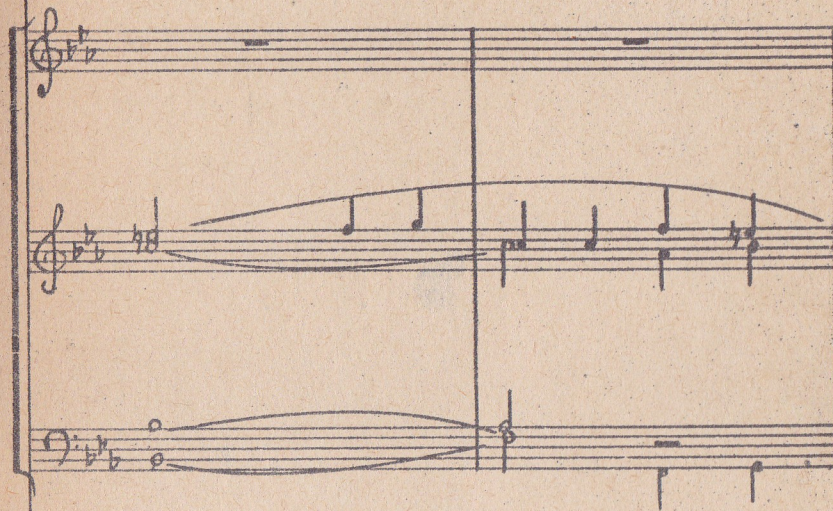




სი-ზმა- რი- ა. ან ზღა-პა- რი



ახ-ღე-ნი- ლანამ-ღვი-ლად:



ჩვენი მი-წა-ზე ყვა-ვო-ლო ბის ზვა- ვო

ჩა- მთ-ვარ- დნი-ლა;

ღმრთე ა. ხა. ლო ხა-ქარ-თვე- ლობ და და-

ღმრთე ა. ხა. ლო ხა-ქარ-თვე- ლობ და და-

ღმრთე ა. ხა. ლო ხა-ქარ-თვე- ლობ და და-

ღმრთე ა. ხა. ლო ხა-ქარ-თვე- ლობ და და-

Handwritten musical score for page 26. The score is written in G major (one sharp) and 4/4 time. It consists of three systems of staves. The first system includes a vocal line with lyrics and two piano accompaniment staves. The lyrics are: გა-ზა-ფხულ- და-ჰველგან მზე- ა. The second system continues the vocal line and piano accompaniment. The third system shows the piano accompaniment for the first two systems, with the vocal line omitted.

Handwritten musical score for page 27. The score continues from page 26, maintaining the same key signature and time signature. It consists of three systems of staves. The first system includes a vocal line with lyrics and two piano accompaniment staves. The lyrics are: და გულ-ში- აც მზე ა- რი. The second system continues the vocal line and piano accompaniment. The third system shows the piano accompaniment for the first two systems, with the vocal line omitted.

სადა ნახავთ თებერვლის თვეს ახე მზიანს,
 ჩვენს მხარეში თებერვალში ჰყვავის ია.
 სიზმარია, ან ზღაპარი
 ახდენილა ნამადვილად:
 ჩვენს მიწაზე ყვავილებს
 ზვავე ჩამოვარდნილა!
 თითქოს ციდან თოვლის ნაცვლად
 ზამბახები ბარდნიდა.
 გაზაფხულდა, ყველგან მზეა
 და გულშიაც მზე. არი, —
 დღეს ახალი საქართველოს
 დაბადების დღე არი,
 იმიტომ, რომ თებერვლის დღეს ლაღს და
 მზიანს
 საქართველოს დაბადების დღეცა ჰქვია!

FM 185
2

უზანო

О. ГОРДЕЛИ

Песня о Грузии

(На грузинском языке)

Тбилиси, 1969 г.

მცხ. რედაქცია: გ. ციციშვილი

ლიტ. რედაქცია: დიმიტრაშვილი
