

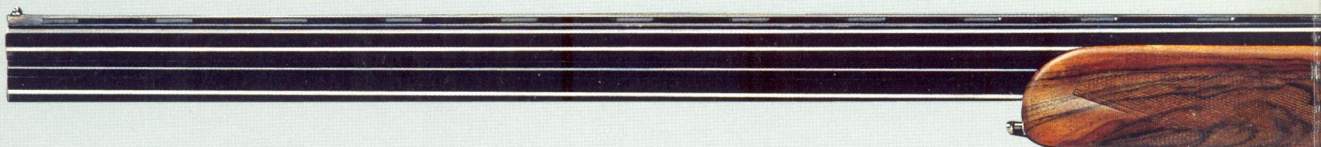
BY APPOINTMENT TO
HRH THE DUKE OF EDINBURGH
RIFLE MAKERS



BY APPOINTMENT TO
HRH THE PRINCE OF WALES
SUPPLIERS OF BESPOKE GUNS, SHOOTING
ACCESSORIES & COUNTRY CLOTHING

HOLLAND & HOLLAND
LONDON

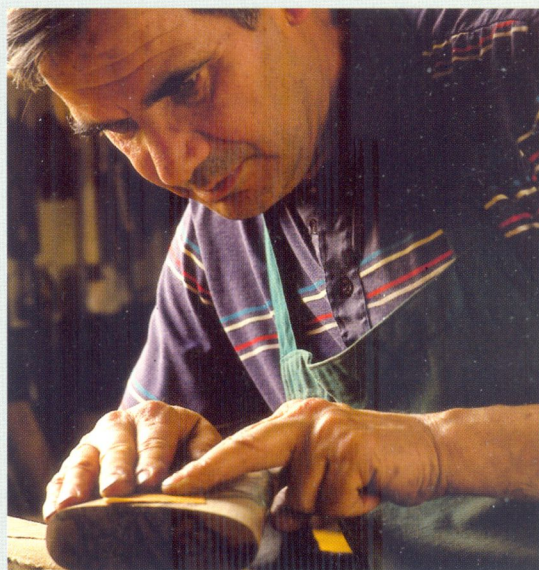
HOLLAND & HOLLAND'S "SPORTING" MODEL OVER-AND-UNDER A CLASSIC SPORTING GUN



The distinguished pedigree of the Holland & Holland gun reaches back to the time when clay target shooting was a fledgling sport, born of the then popular pastime of live pigeon shooting. Now, at the start of the new millennium, clay shooting has developed into a superb discipline in its own right. To meet its challenges, the company's gunmakers have produced a design to give the enthusiast who enjoys both clay and game shooting that vital competitive edge. In so doing they have enhanced their unique reputation for innovation tempered by tradition.

The "Sporting" over-and-under retains all the aesthetic distinction of a Holland & Holland gun, together with a bespoke gun's instinctive handling. Yet the design is robust and more than equal to the demands of the customer who wishes to shoot all the year round at both clays and game, and who will fire many thousands of cartridges in the process. Versatility is the key to the performance of this exciting over-and-under shotgun and its design offers tremendous scope for the committed shooter with specific requirements.

Ease of maintenance and absolute reliability are the key to the "Sporting" model. The unique single selective trigger-lock assembly is easily removed by means of a lever concealed inside the trigger guard, and it may be interchanged with a spare unit. When the unit is removed, the gun is obviously immobilised, a feature that is particularly valuable when travelling. Furthermore, it allows for easy inspection after use in poor weather conditions, and for cleaning.



The stock is polished to expose its colour and figuring

Individual barrel selection is also offered, operated by means of a barrel selector incorporated within the safety catch thumbpiece. The provision of an instant choice of appropriate choke for the target or quarry allows the shooter a greater mastery of his performance. This innovative feature is a bonus for the serious shot.

Available in a choice of styles and made to individual specifications, the "Sporting" Competition model format also allows the competitor to avail himself of a choice of barrel length and rib style, with the option of a competition stock and forend and interchangeable choke tubes suitable for lead, steel and other non-toxic shot.

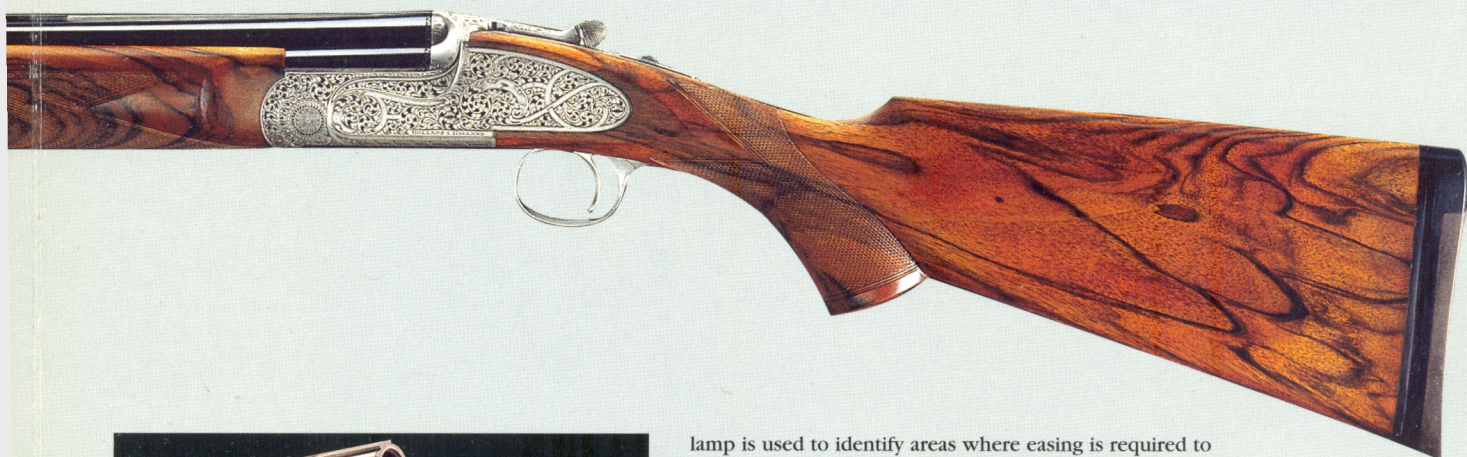
The "Sporting" Game gun offers a similar choice with regard to barrel options and also promises lively,



Walnut, seasoned for up to ten years, will provide the stock for the gun



Actions engraved by our master engraver.



Innovative features: a detachable trigger unit and interchangeable choke tubes

responsive handling with its elegant semi-pistol grip and slim forend, together with the durability that true craftsmanship confers.

Lock, stock and barrel, the gun is a thoroughbred. Over 750 hours of highly-skilled work go into creating the finished piece.

The barrels are made on the demi-block principle, where the barrel tubes are individually machined from a single forging and then brazed together at the breech - a method long recognised as providing the strongest construction possible. This is the over-and-under equivalent of chopper lump barrels as found on the "Royal" side-by-side and is a feature of only the finest gun. The ribs are fixed in the traditional manner using pure tin fluxed with rosin. The chokes are then fitted and regulated to produce the finest shot patterns.

The action shop will 'joint' the barrels to the action to minute tolerances and the very fine smoke from an oil

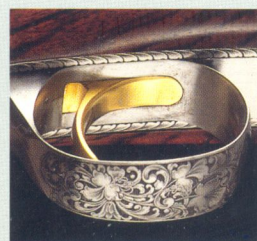
lamp is used to identify areas where easing is required to ensure a perfect fit. After actioning, the assembly is sent to the London Proof House for testing.

Now the action will be engraved by our master engravers with either our "Sporting" engraving pattern or special customised designs commissioned by the client. These individual patterns are invariably both imaginative and creative and impart a unique style and quality to the gun.

Walnut, seasoned for up to ten years and chosen for its distinct contrast in colour and figuring, will provide the stock for the new gun. The stock maker will first inlet the action into the head of the blank before going on to shape the stock to the client's individual measurements. Finally the stock is polished and oiled in the traditional manner to expose the richness and depth of its colour and figuring.

'Finishing' the gun is the final stage where each individual component will be highly polished and fitted by hand. The subtle smoothing and easing that follow will ensure the crisp trigger pulls and smooth ejection so characteristic of this model.

The "Sporting" over-and-under shotgun is by definition a working gun, but it is a gun so perfectly suited to its purpose that it becomes a work of art. The finished result is always breathtaking in terms of execution and imagination and truly a Best London gun in every sense. ■



Engraving details

STANDARD SPECIFICATION

- Action** Holland & Holland design with removable selective single trigger-lock assembly, top lever opening with thumbpiece, non-automatic safety incorporating barrel selector.
- Barrels** From 25" to 32" (64cm to 81cm) integral breech construction for use with lead or non-toxic shot. Chokes bored as required or interchangeable choke tubes. Superior proof 2³/₄" or 3" (70mm or 76mm) chambers. Game or ventilated rib.
- Stock** Selected walnut with a choice of grip styles, finely chequered and oil finished, gold oval engraved with initials or crest, recoil pad or butt plate.
- Engraving** Medium scroll engraving with bright finish.

OPTIONAL EXTRAS

Optional extras can include colour hardened action with gold name inlay, ribbon scroll or fine scroll engraving variations, deluxe engraving, special patterns, relief scrolls, game scenes, carving or gold inlays, extra interchangeable barrels, automatic safety catch, deluxe grade walnut for stock and forend, leather covered recoil pad or light-weight leather gun case.

INTERNATIONAL GUNROOMS

31-33 Bruton Street, London W1X 8JS
Tel: +44 (0) 20 7499 4411

29 avenue Victor Hugo, Paris 75116
Tel: +33 (0) 1 45 02 22 00

50 East 57th Street, New York NY 10022
Tel: +1 212 752 7755

